

# Velcro Strips

## for Room Sensors

### **Important**

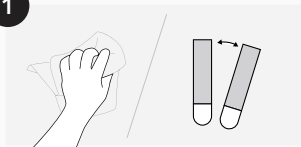
Failure to follow instructions carefully may cause damage!

Do not use with wallpaper or hang over beds. May not adhere well to vinyl surfaces.

Apply to surfaces above 50°F (10°C). Adhesive could lose adhesion above 105°F (40°C).

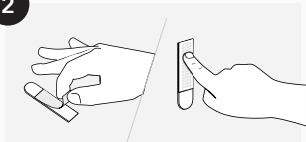
## To Apply

1



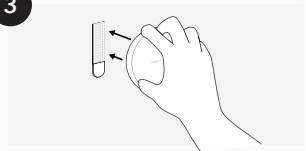
Clean surface with rubbing alcohol. Do not use household cleaners. Separate strips.

2



Remove protective film and press to wall for 10 seconds.

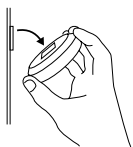
3



Place your Room Sensor on the velcro strip as shown. Press firmly.

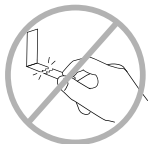
## To Remove

1



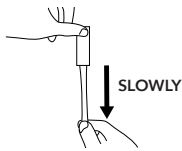
Remove Room Sensor from wall. Do not pull straight off.

2



Never pull the strip towards you! Always pull straight down.

3



Press top of strip and pull tab slowly down along the wall at least 6 inches (15cm) until strip releases.