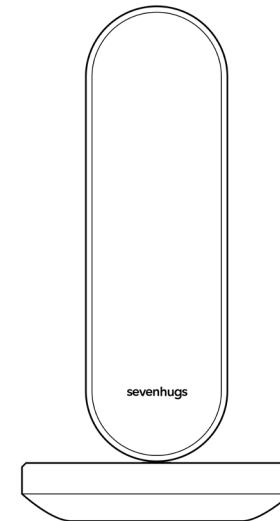


smart
remote
by sevenhugs

Need help? Have questions?
We're here for you.

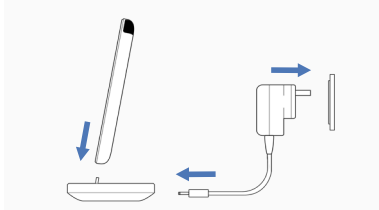
sevenhugs.com/support



Smart Remote

Installation Guide

1 Turn on Smart Remote and connect it to Wi-Fi



Place Smart Remote on Charging Base to turn it on.

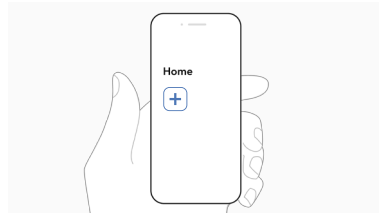


Connect Smart Remote to Wi-Fi.

2 Add everything you want to control

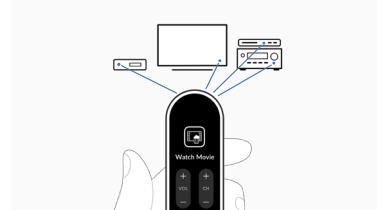


Download and launch the Sevenhugs Smart Remote app.
sevenhugs.com/app

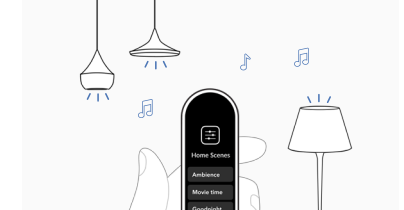


Add devices and services you want to control using the app.

3 Enhance your experience with scenes

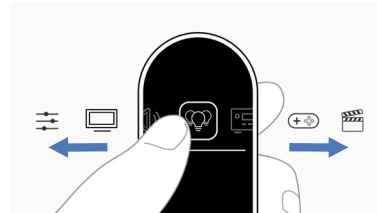


Create A/V Scenes to control multiple devices together.

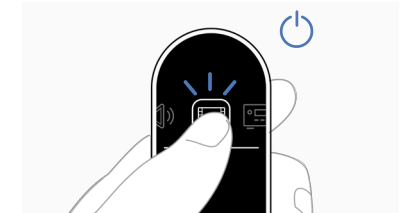


Create Smart Home Scenes and group multiple lights together.

4 Start controlling your world



Select what you want to control by swiping in the carousel.



Turn on/off by tapping the icon.



When you're ready to add the magical control experience to your Smart Remote, just follow the instructions in the Room Sensors Installation Guide. You can do this now or at any time in the future.